

Notice de pose du faisceau électrique pour  
crochet d'attelage avec prise 7 voies type 12N

Version : 5 DOORS

Année : 06/2003 →

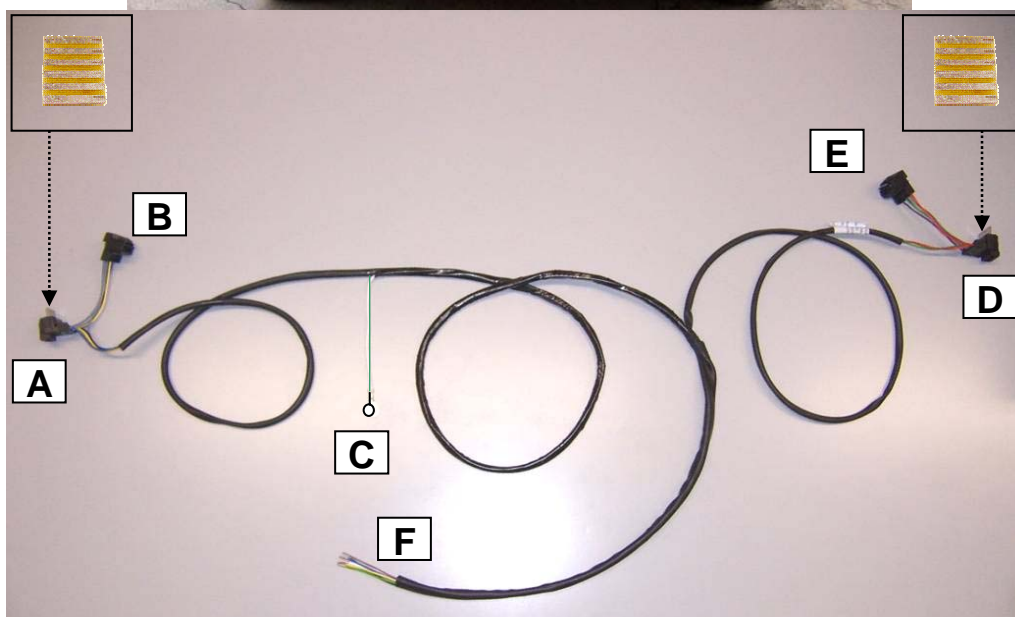
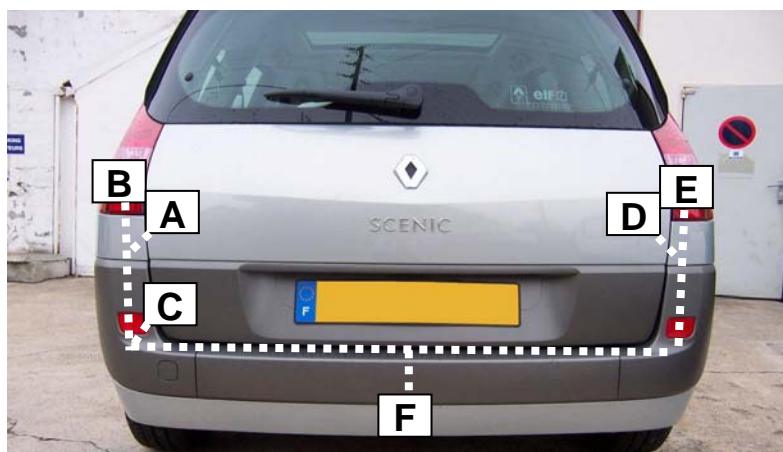
**RENAULT SCENIC II**

Réf : 165044

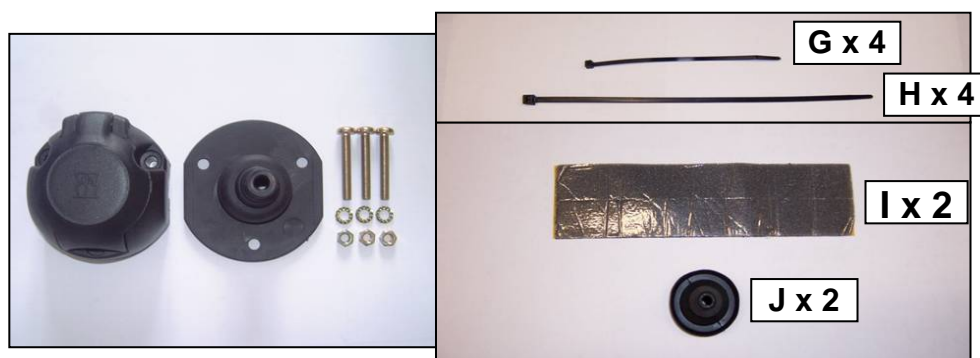


0 H 30

Einbauanleitung elektrosatz Anhängervorrichtung mit 12N Steckdose  
Fitting instructions electric wiringkit towbar with 12N socket  
Montage-handleiding elektrokabelset voor trekhaakmet 12N contactos

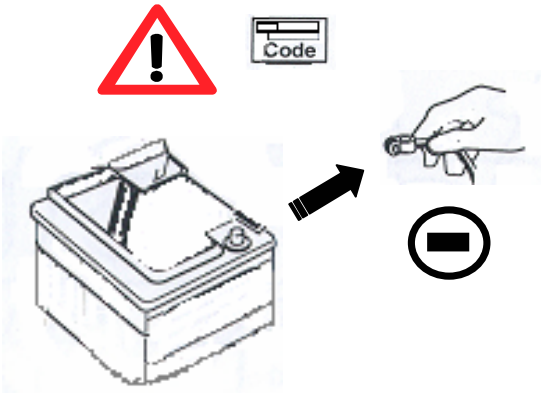


Liste des pièces / Teilliste / Part list / Onderdelenlijst :

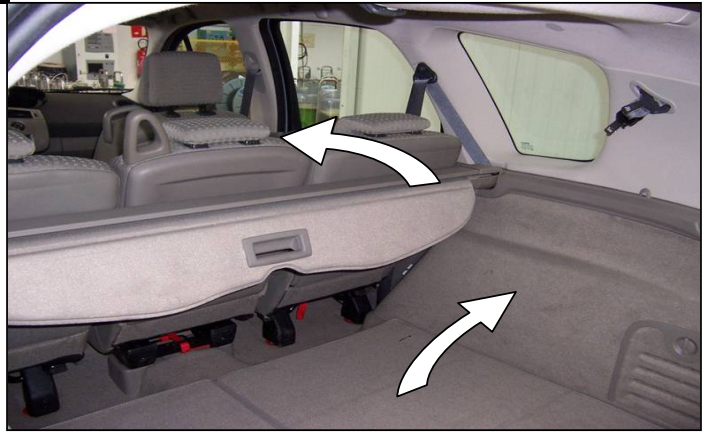


Cette notice ne peut être divulguée ou reproduite, partiellement ou en totalité, sans accord de la société.

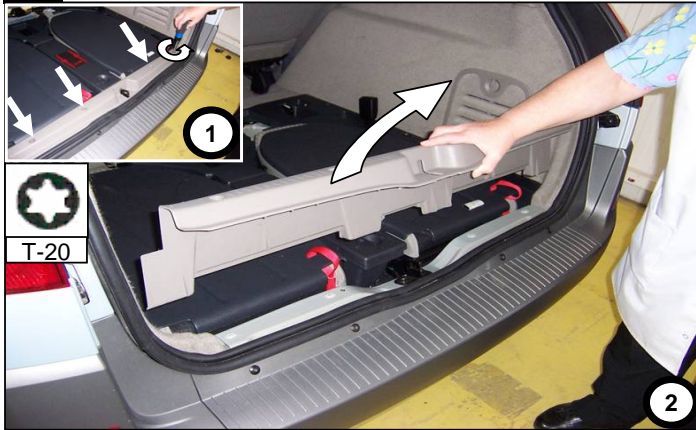
1



2



3



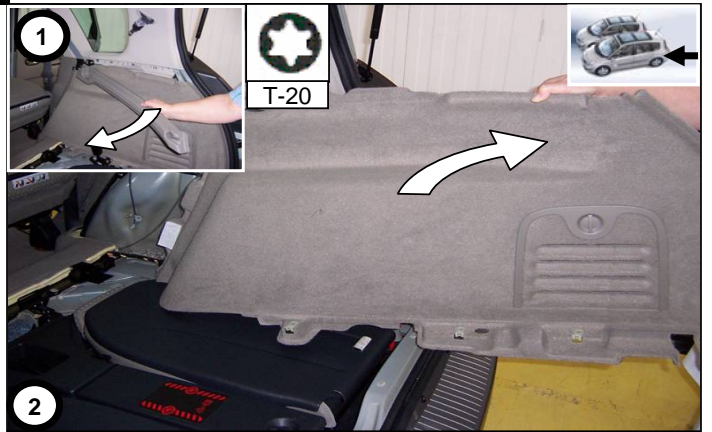
4



5



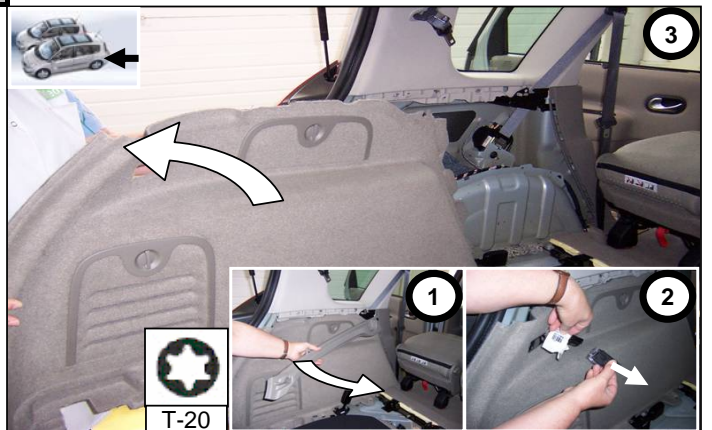
6



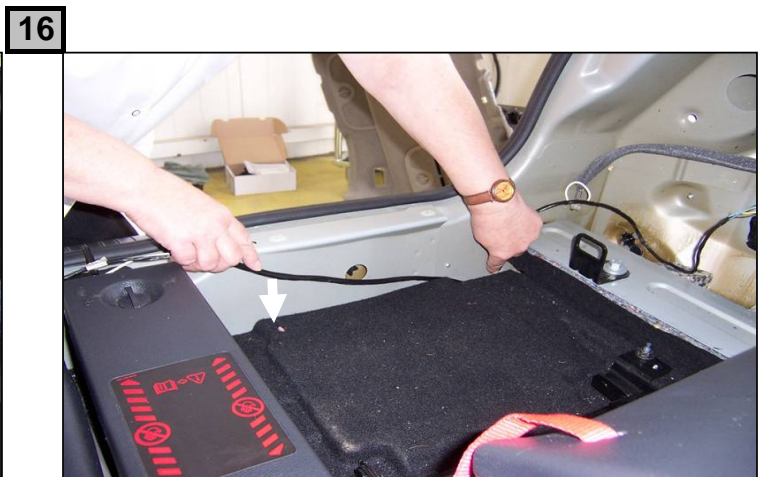
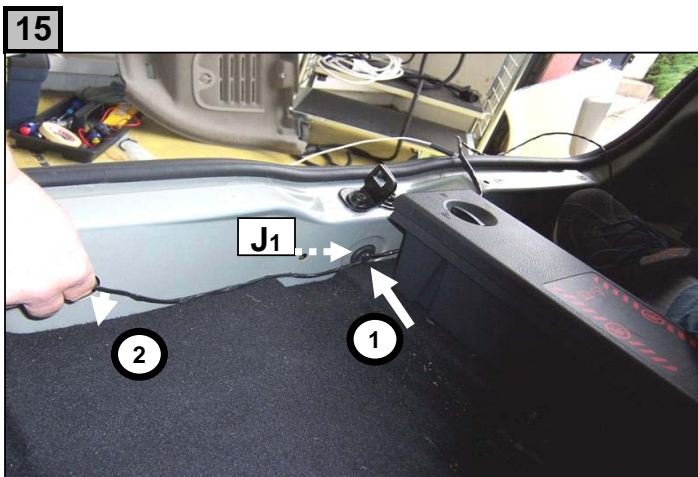
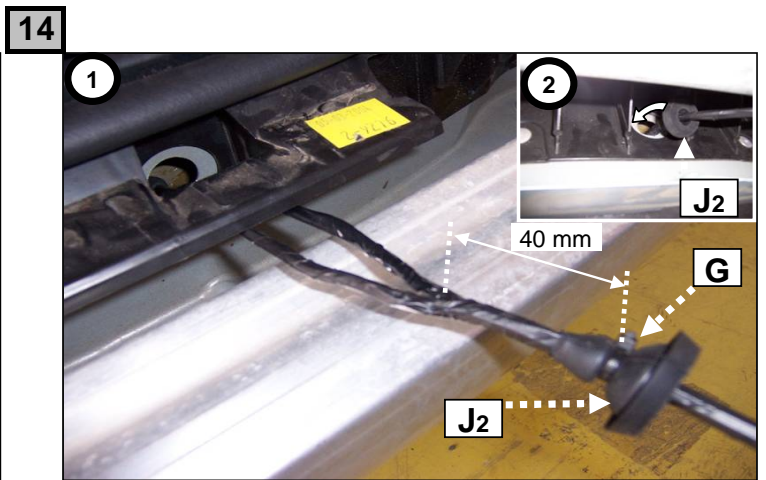
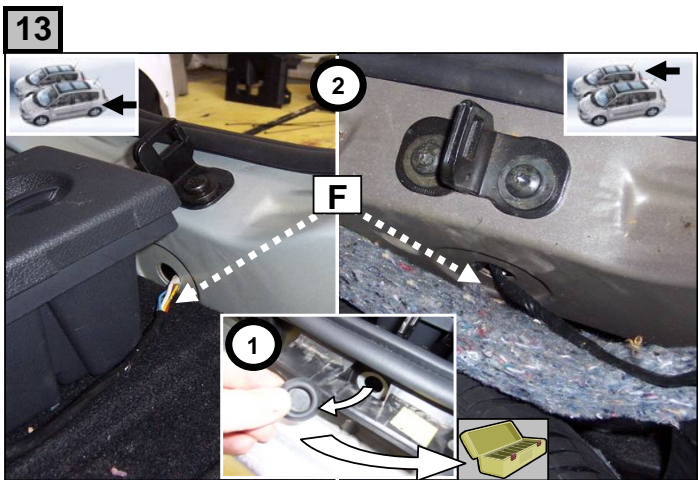
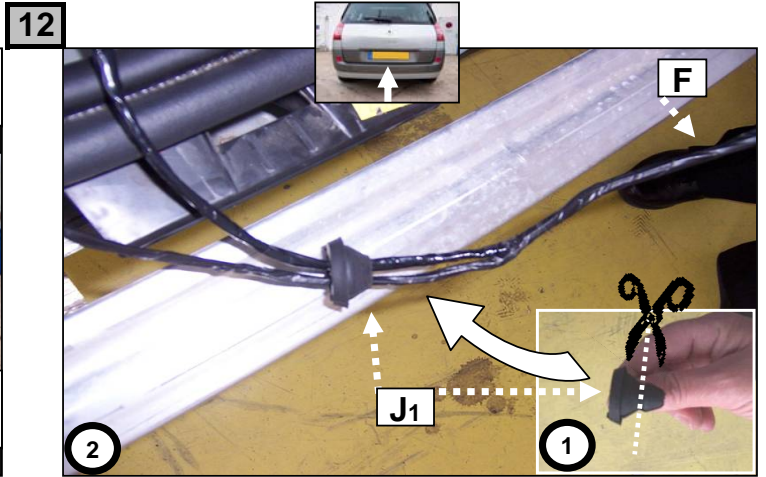
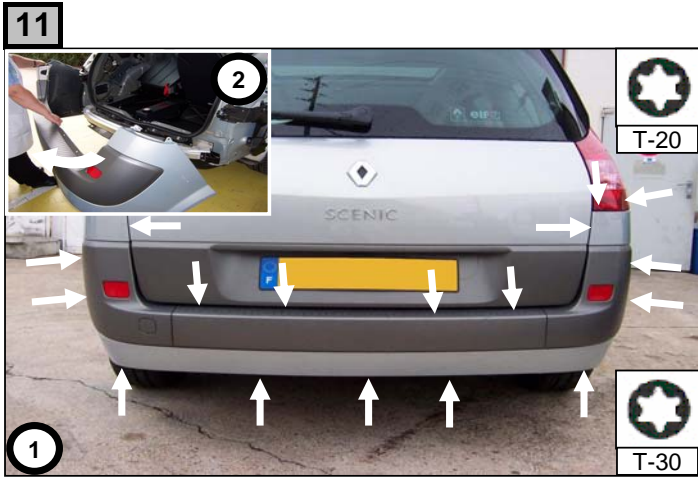
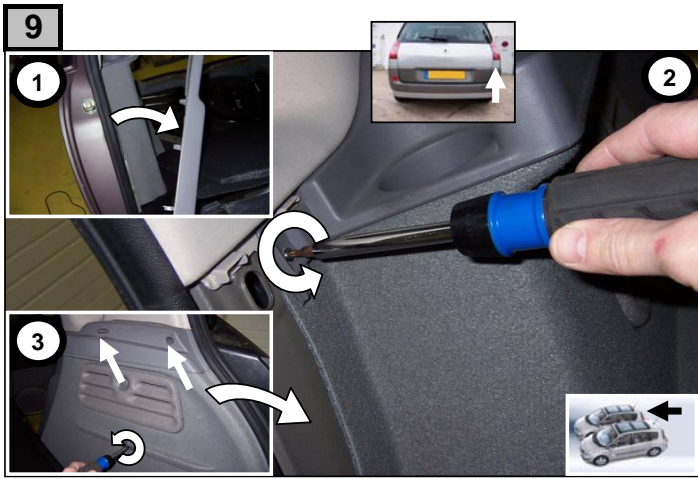
7



8





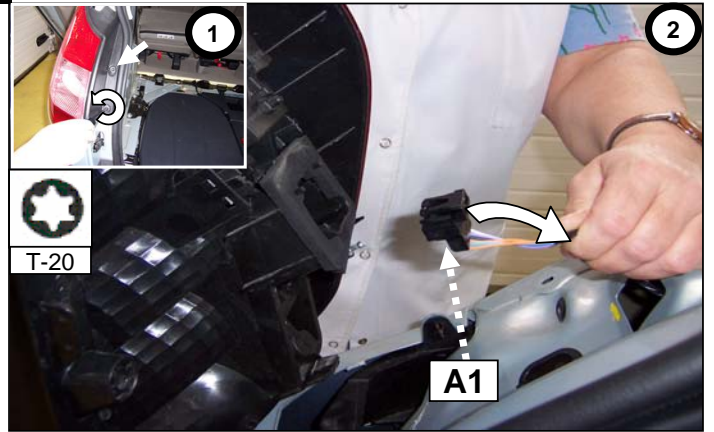
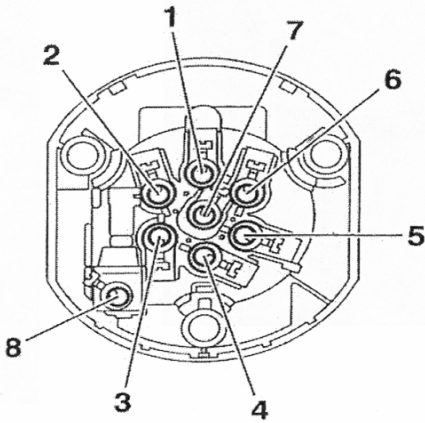




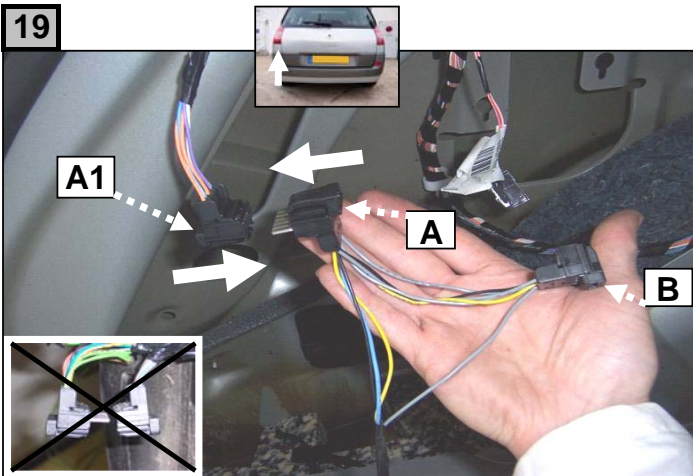
17

	1/L	2/54g	3/31	4/R	5/58R	6/54	7/58L	8/58B
<b>F</b>	Jaune	Bleu	Vert/jaune	Vert	Marron	Rouge	Noir	Gris
<b>D</b>	Gelb	Blau	Grün/gelb	Grün	Braun	Rot	Schwarz	Grau
<b>GB</b>	Yellow	Blue	Green/yellow	Green	Brown	Red	Black	Grey
<b>NL</b>	Geel	Blauw	Groen/geel	Groen	Bruin	Rood	Zwart	Grijs
<b>P</b>	Amarelo	Azul	Verde/amarelo	Verde	Castanho	Vermelho	Preto	Cinzeno
<b>I</b>	Giallo	Blu	Verde/giallo	Verde	Marrone	Rosso	Nero	Grigio
<b>E</b>	Amarillo	Azul	Verde/amarillo	Verde	Marron	Rojo	Negro	Gris

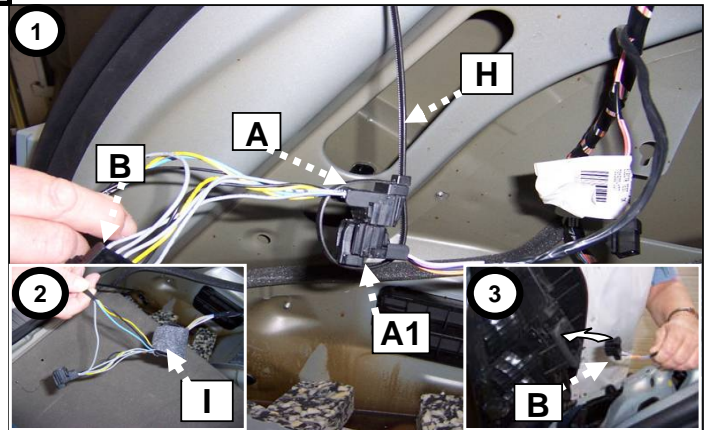
18



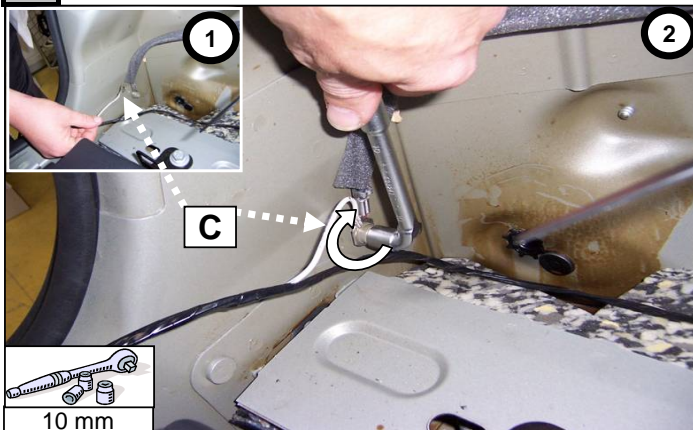
19



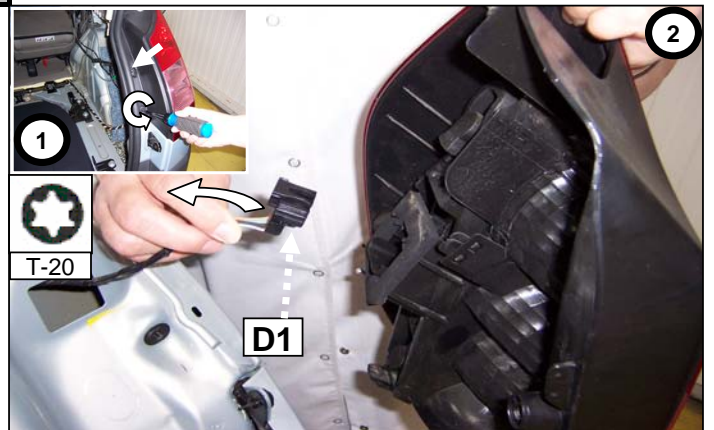
20

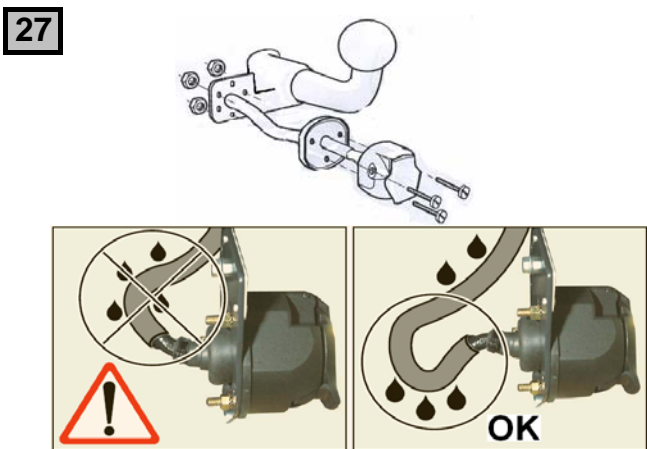
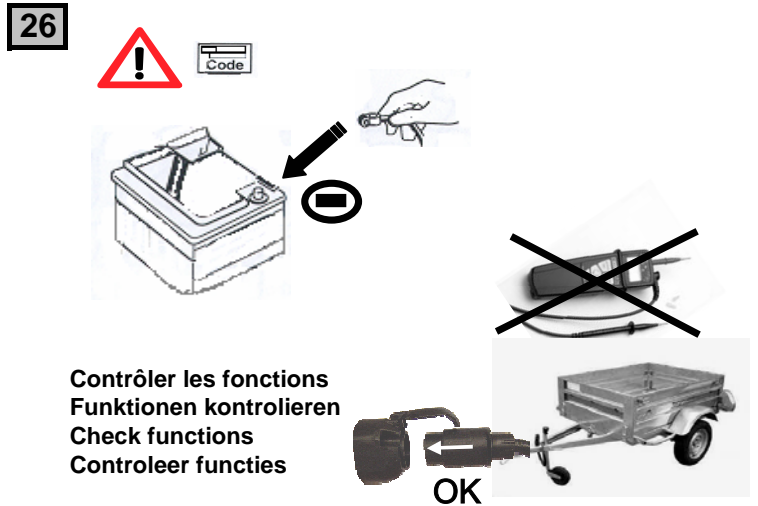
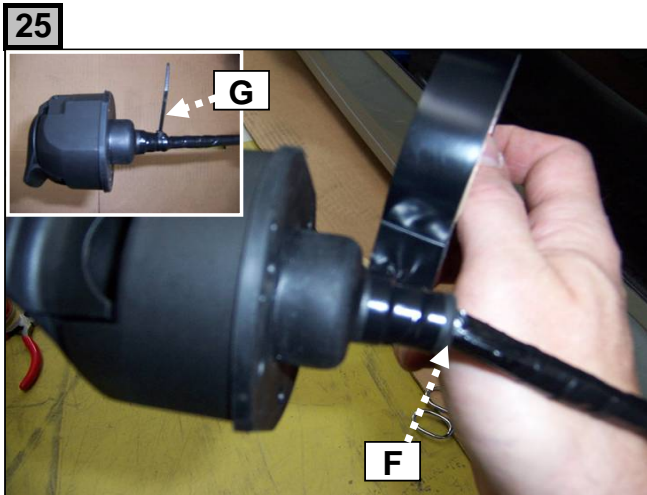
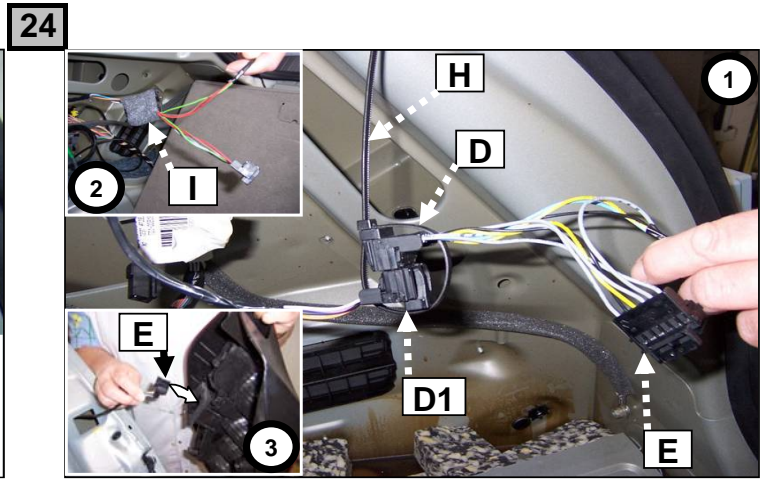
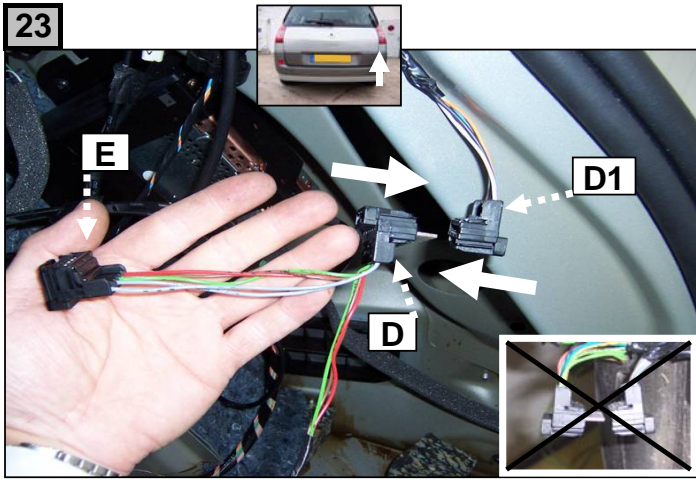


21



22





Lors du branchement de la remorque, désactiver le système "RADAR DE REcul" au tableau de bord  
When you connect the trailer, do remove the function "PARK ASSIST" on the dashboard